



Diaphragm Pump 36 Series

The Seaflo 36 series pumps eliminate rapid switch cycling completely. Matched with a sealed motor, heavier wire & low amp draw, the 36 series is designed to take on any task from constant flow at high pressure to the abusive environment of on and off spot spraying in the field.

Features & Benefits

- Positive displacement pump
- Can run dry
- Quiet operation
- By Pass Pump
- Industry standard mount pattern

Typical Applications

- Water Treatment/Ro
- Beverage/Food Service
- Distillation Equipment
- Agricultural Spraying
- General Industrial
- Automotive
- Marine/RV

PUMP

- Type**
3 Chamber positive displacement diaphragm pump, self priming, capable of being run dry
- Mode**
By pass
- Liquid Temperature**
140°F (60°C) Max.
- Priming Capabilities**
6 feet (1.8 m) suction lift
- Max Pressure**
120 PSI (8.3 bar)

Inlet/Outlet Ports

3/8" -18 FNPT

Weight

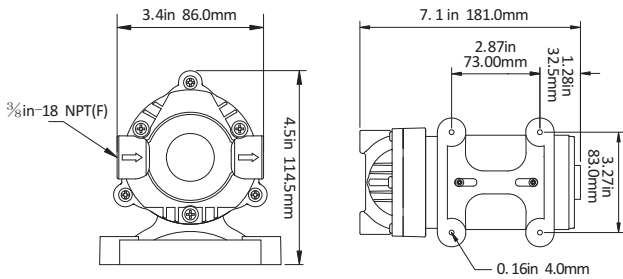
5.2 lbs (2.35 kg)

MOTOR

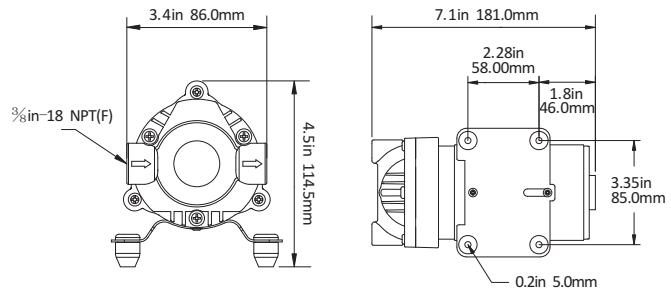
- Duty Cycle**
Continuous
- Voltage**
DC 12v/DC 24v
AC 110v/AC 220v

Leads

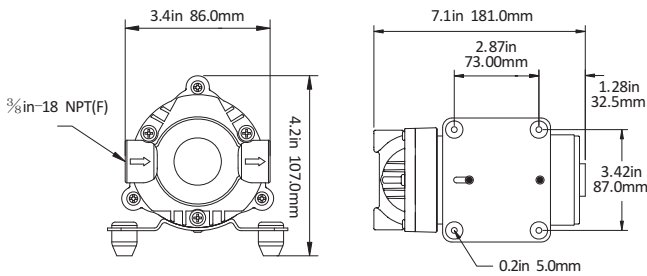
- DC: 16 AWG, 4.5" long with 2-Pin connector/Leads
- AC: 16 AWG, 19.5" long with Leads



High Temperature & Soft Rubber Plate

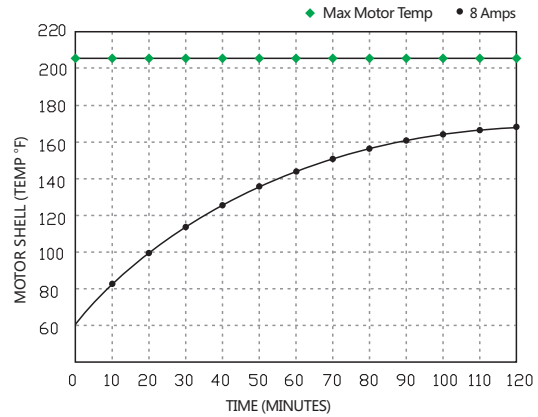


High Rubber Feet Metal Plate



Flat Rubber Feet Metal Plate

HEAT RISE



PUMP PERFORMANCE

1.8 GPM

PSI	BAR	GPM	LPM
OPEN	0	1.90	7.20
10	0.69	1.82	6.87
20	1.38	1.76	6.65
30	2.07	1.68	6.34
40	2.76	1.63	6.16
50	3.45	1.59	6.00
60	4.14	1.52	5.77
70	4.83	1.45	5.49
80	5.52	1.31	4.96
90	6.21	0.82	3.10
100	6.90	0.49	1.84
110	7.59	0.29	1.10
120	OFF	0	0

1.5 GPM

PSI	BAR	GPM	LPM
OPEN	0	1.56	5.90
10	0.69	1.44	5.45
20	1.38	1.38	5.23
30	2.07	1.35	5.11
40	2.76	1.31	4.97
50	3.45	1.28	4.85
60	4.14	1.25	4.73
70	4.83	1.22	4.62
80	5.52	1.18	4.45
90	6.21	0.80	3.02
100	6.90	0.46	1.74
110	7.59	0.26	1.00
120	OFF	0	0

STANDARD PUMP CONFIGURATIONS

Model	Switch	GPM/LPM	PSI/BAR	Max Draw (A)	Valves	Diaphragm	Ports	Voltage	Wire Connections
SFDP1-015-120-36	By Pass	1.5/5.5	120/8.3	10.0	Viton	Santoprene	3/8"-18 FNPT	12V	2-Pin/Leads
SFDP2-015-120-36	By Pass	1.5/5.5	120/8.3	5.0	Viton	Santoprene	3/8"-18 FNPT	24V	2-Pin/Leads
SFDP1-018-120-36	By Pass	1.8/7.0	120/8.3	12.0	Viton	Santoprene	3/8"-18 FNPT	12V	2-Pin/Leads
SFDP2-018-120-36	By Pass	1.8/7.0	120/8.3	6.0	Viton	Santoprene	3/8"-18 FNPT	24V	2-Pin/Leads
SFDPA1-015-120-36	By Pass	1.5/5.5	120/8.3	0.8	Viton	Santoprene	3/8"-18 FNPT	110V	Leads
SFDPA2-015-120-36	By Pass	1.5/5.5	120/8.3	0.5	Viton	Santoprene	3/8"-18 FNPT	220V	Leads

Consult factory for other available models