



Diaphragm Pump 35 Series

New from Seaflo, the 35 series pumps are capable of continuous heavy duty and extreme workloads. Matched with high performance motor, the 35 series has extreme chemical capability and goes beyond the normal call of duty with many other additives as well. Seaflo also offers a variety of easy connect fittings and filters.

Features & Benefits

- Positive displacement pump
- Can run dry
- Quiet operation
- Demand Pump
- Easy connect fittings
- Industry standard mount pattern

Typical Applications

- Water Treatment/Ro
- Beverage/Food Service
- Distillation Equipment
- Agricultural Spraying
- General Industrial
- Automotive
- Marine/RV

PUMP

- Type**
3 Chamber positive displacement diaphragm pump, self priming, capable of being run dry
- Mode**
demand
- Liquid Temperature**
140°F (60°C) Max.
- Priming Capabilities**
6 feet (1.8 m) suction lift
- Max Pressure**
160 PSI (11 bar)

- Inlet/Outlet Ports**
5/8" QUICK ATTACH
- Weight**
5.7 lbs (2.6 kg)

MOTOR

- Duty Cycle**
Continuous
- Voltage**
DC 12v/DC 24v
AC 110v/AC 220v
- Leads**
DC: 16 AWG, 4.5" long with 2-Pin connector/Leads
AC: 16 AWG, 19.5" long with Leads

FITTINGS

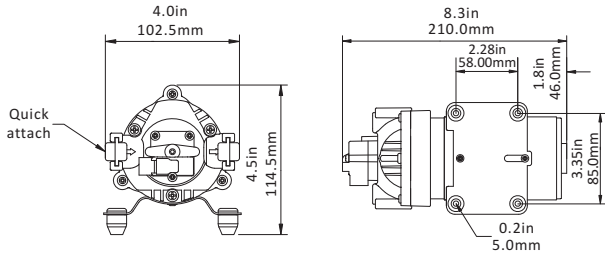
Item Number	Size	Fitting Type	Material
35F01	5/8" QA x 3/8" Barb	HB Straight Fitting w/ O-Ring	Nylon
35F02	5/8" QA x 1/2" Barb	HB Straight Fitting w/ O-Ring	Nylon
35F03	5/8" QA x 3/8" Barb	HB Elbow Fitting w/ O-Ring	Nylon
35F04	5/8" QA x 1/2" Barb	HB Elbow Fitting w/ O-Ring	Nylon



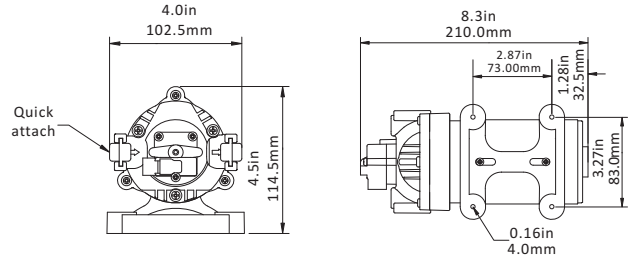
FILTER

Item Number	Size	Fitting Type	Mesh Size	Material
35S01	5/8" Female Quick Attach	5/8" Male Quick Attach	50	Nylon

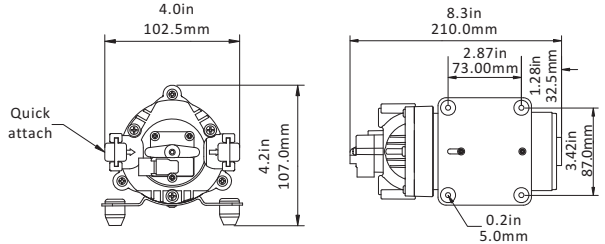




High Rubber Feet Metal Plate



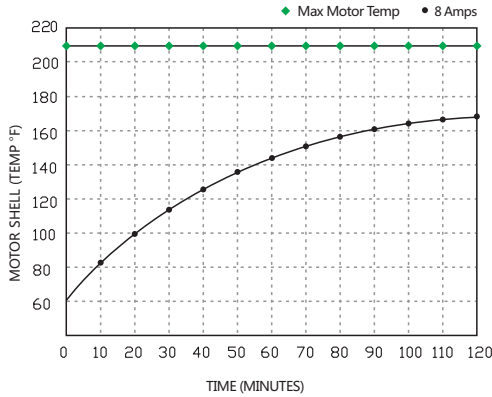
High Temperature & Soft Rubber Plate



Flat Rubber Feet Metal Plate



HEAT RISE



PUMP PERFORMANCE

PSI	BAR	1.8 GPM	
		GPM	LPM
OPEN	0	1.77	6.07
10	0.69	1.66	6.30
20	1.38	1.56	5.90
30	2.07	1.48	5.60
40	2.76	1.40	5.30
50	3.45	1.29	4.90
60	4.14	1.22	4.60
70	4.83	1.19	4.50
80	5.52	1.16	4.40
90	6.21	1.14	4.30
100	6.90	1.11	4.20
110	7.59	1.08	4.10
120	OFF	0	0

1.5 GPM

PSI	BAR	1.5 GPM	
		GPM	LPM
OPEN	0	1.43	5.40
10	0.69	1.36	5.15
20	1.38	1.27	4.80
30	2.07	1.22	4.62
40	2.76	1.16	4.40
50	3.45	1.11	4.20
60	4.14	1.06	4.00
70	4.83	1.03	3.90
80	5.52	1.00	3.80
90	6.21	0.98	3.70
100	6.90	0.95	3.60
110	7.59	0.90	3.40
120	8.28	0.87	3.30
130	8.97	0.85	3.20
140	9.66	0.82	3.10
150	10.34	0.79	3.00
160	11.03	OFF	0

STANDARD PUMP CONFIGURATIONS

Model	Switch	GPM/LPM	PSI/BAR	Max Draw (A)	Valves	Diaphragm	Ports	Voltage	Wire Connections
SFDP1-015-080-35	Demand	1.5/5.5	80/5.5	7.0	Viton	Santoprene	5/8" Quick Attach	12V	2-Pin/Leads
SFDP2-015-080-35	Demand	1.5/5.5	80/5.5	4.0	Viton	Santoprene	5/8" Quick Attach	24V	2-Pin/Leads
SFDP1-015-100-35	Demand	1.5/5.5	100/6.9	9.0	Viton	Santoprene	5/8" Quick Attach	12V	2-Pin/Leads
SFDP2-015-100-35	Demand	1.5/5.5	100/6.9	4.5	Viton	Santoprene	5/8" Quick Attach	24V	2-Pin/Leads
SFDP1-015-120-35	Demand	1.5/5.5	120/8.3	10.0	Viton	Santoprene	5/8" Quick Attach	12V	2-Pin/Leads
SFDP2-015-120-35	Demand	1.5/5.5	120/8.3	5.0	Viton	Santoprene	5/8" Quick Attach	24V	2-Pin/Leads
SFDP1-015-160-35	Demand	1.5/5.5	160/11.0	12.0	Viton	Santoprene	5/8" Quick Attach	12V	2-Pin/Leads
SFDP2-015-160-35	Demand	1.5/5.5	160/11.0	6.0	Viton	Santoprene	5/8" Quick Attach	24V	2-Pin/Leads
SFDP1-018-080-35	Demand	1.8/7.0	80/5.5	9.0	Viton	Santoprene	5/8" Quick Attach	12V	2-Pin/Leads
SFDP2-018-080-35	Demand	1.8/7.0	80/5.5	4.5	Viton	Santoprene	5/8" Quick Attach	24V	2-Pin/Leads
SFDP1-018-100-35	Demand	1.8/7.0	100/6.9	10.0	Viton	Santoprene	5/8" Quick Attach	12V	2-Pin/Leads
SFDP2-018-100-35	Demand	1.8/7.0	100/6.9	5.0	Viton	Santoprene	5/8" Quick Attach	24V	2-Pin/Leads
SFDP1-018-120-35	Demand	1.8/7.0	120/8.3	12.0	Viton	Santoprene	5/8" Quick Attach	12V	2-Pin/Leads
SFDP2-018-120-35	Demand	1.8/7.0	120/8.3	6.0	Viton	Santoprene	5/8" Quick Attach	24V	2-Pin/Leads
SFDPA1-015-120-35	Demand	1.5/5.5	120/8.3	0.8	Viton	Santoprene	5/8" Quick Attach	110V	Leads
SFDPA2-015-120-35	Demand	1.5/5.5	120/8.3	0.5	Viton	Santoprene	5/8" Quick Attach	220V	Leads
SFDPA1-015-160-35	Demand	1.5/5.5	160/11.0	1.1	Viton	Santoprene	5/8" Quick Attach	110V	Leads
SFDPA2-015-160-35	Demand	1.5/5.5	160/11.0	0.6	Viton	Santoprene	5/8" Quick Attach	220V	Leads

Consult factory for other available models